



YARRAM YARRAM LANDCARE NEWS

Vol: 005 SUMMER December 2011

Victorian Landcare Awards

Honouring the "Unknown Landcarer".

This nomination is for those Landcare individuals who choose to avoid the spotlight, or are too humble to want to be nominated, despite the fact that their efforts are more than worthy of recognition.

While your Landcare Group may know who you are, the Victorian Landcare community does not. But we know you are out there and would like to say thanks!

This is for those people who are always there in the background, supporting the group in their activities, the one who will always step in to fill a gap or role, the ones who provide their home, their farm, their shed, their cooking or their time.

This is for those who will not directly accept public recognition, public thanks or stand up and say 'I have done my part'.

**Landcare would not be where it is,
25 years young, without people like you.**

Excerpt from: 2011 Victorian Landcare Awards Winner Booklet



Inside

Events Update..... 2

Victorian Awards 3

Local Landcare Legends 4-5

Board Profiles..... 5

Landcare Action..... 6

Around the Traps..... 7

Partner Activity..... 8

From the Office 9

Project Updates 10-14

Warren the Wise..... 15



EVENTS UPDATE

YARRAM YARRAM LANDCARE NETWORK

Newsletter production and design is driven by volunteers. If you would like to help with writing, photography or even have your very own column, please contact us. Alternatively, send contributions whenever the whimsy inspires you.

Editorial Team

Melissa Ainsworth, Helga Binder, Dan Garlick, Samantha Monks and Warren the Wise.

Contributions

Email:
dang@wgcm.vic.gov.au
Postal:
Livingston St Yarram 3971

Deadlines

All contributions for the Autumn edition must be received before 17th February, 2012.

Contacts

Yarram Yarram Landcare Network

Livingston Street Yarram Victoria 3971
Tel: 03 5182 5073
Fax: 03 5182 6094
dang@wgcm.vic.gov.au
www.yyln.org.au

Dan Garlick

Network Coordinator
0400 175 085 or 5165 5893
dang@wgcm.vic.gov.au
Samantha Monks
YYLN Projects Officer
5175 7895 or 0419 371 497
samantham@wgcm.vic.gov.au
Bronwyn Johnson
Seedbank & Mullungdung to Coast Project Officer - 5175 7896 or 0429 808 130
bronwynj@wgcm.vic.gov.au

Printing and distribution of this newsletter has been made possible through a WGCM Small Grant.

Printed on 100% post consumer recycled paper, using non toxic inks and 100% solar power.



3rd December - Binginwarri Group is visiting the Heggan's property at Binginwarri to see their revegetation works. Thomasin Gannon from Eccentric Consulting will also be speaking about EVC's, Carbon Storage, Trading and Offsets. All welcome. RSVP to Kaye on 5185 1398.

3rd January - Coastal wildlife display in the Port Albert Hall

6,7,8 January - a whole smorgasbord of marine wildlife displays and activities at the Port Welshpool Seadays Festival

20th January - a *Minibeast Safari* on the Tarra River, and a walk from the inlet to the ocean at McLoughlins Beach with a PV Ranger in the afternoon of the same day. There are more activities at Port Albert and Seaspray

plus Rockpool Rambles and Dinosaur activities further afield at Walkerville and Inverloch. For the full *Summer by the Sea* program, contact Bruce Atkin on 51839116

21st January - Binginwarri Group is holding a "Reptile Ramble" with expert Steve Derby. All welcome. RSVP to Kaye on 5185 1398.

19th February - Binginwarri Group is visiting Richard Appleton's property at Balook. Looking at his Rainforest Buffer project, Richard will also talk about Conservation Covenants. All welcome. RSVP to Kaye on 5185 1398.

Feb 2012 - Gippsland (locations to be determined): **Feed pad designs and planning tours**, run by Gippsdairy - Dairying for Tomorrow Program, contact

Gillian Hayman (Dairying for Tomorrow Coordinator) 5683 2663

March 2012 - YYLN Annual BBQ - location and details to be determined. BBQ, music, planting, recognising the State Landcare Award Honour Roll people.

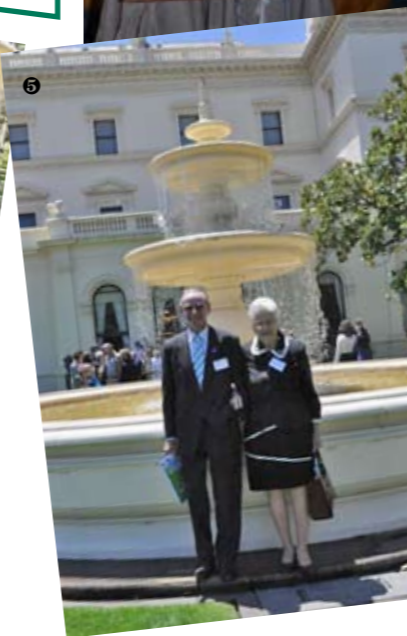
April 2012 - South Gippsland (locations to be determined): Dairy Farmers - **Feeding Pastures for Profit (including the new Rotation Right Tool)**, run by DPI, contact Frank Mickan 5624 2259

Autumn 2012 - **Healthy Soils Field Day** - location and date to be determined. Focusing on soil carbon.

Autumn 2012 - **Weed Awareness Workshop**, Seaspray, location and details to be determined

VICTORIAN LANDCARE AWARDS

- 1 Joy & David McAninly - Honour Roll - Platinum - more than 25yrs service
- 2 David McAninly, Libby, Sam & Dan
- 3 Jenny & Rob Davies - Honour Roll - Gold cat. 20-25 Yrs service to Landcare
- 4 Libby Balderstone in Ballroom, Government House
- 5 Eddie & Pat Brand - Drought Pastures Group award nominees & Honour Roll - Platinum - more than 25 yrs service
- 6 Sue & David MacAulay - Honour Roll - Platinum Cat. - more than 25 years service to Landcare (& David MacAulay - Individual Landcare Award nominee)
- 7 YYLN Group



Hosted by The Hon Alex Chernov AO QC, Governor of Victoria, a big crowd of landcarers from all around the State gathered at Government House on Wednesday 16 November to hear the announcement of the State Landcare Award winners. It was certainly a successful day for YYLN!



Victorian Landcare Awards

Congratulations to Libby Balderstone winner:

- DPI Sustainable Farming Award West Gippsland Region
- Victorian Primary Producer Award

This is a tremendous achievement for Libby who has been involved with Landcare for many years and was a founding member of the Woodside Landcare Group, serving as President for a period. She was also instrumental in the establishment of the Yarram Yarram Landcare Network and served on many other natural resource management committees and working groups.

Libby has created a magnificent example of sustainable agriculture at Warrigal Creek, a 1378ha sheep, beef and cropping property. Despite challenging climatic conditions, Libby has managed Warrigal Creek's environmental, social and economic factors in a

integrated and interdependent manner to ensure it is a sustainable enterprise.

Congratulations to our State Landcare Award finalists:

David MacAulay: Individual Landcarer Award;
Gippsland Plains Drought Tolerant Pastures Group: Australian Government Innovation in Sustainable Farming Award;
Woodside Landcare Group: Toshiba Community Group Award.

The quality of applications was extremely high and Yarram certainly showed its Landcare strength.

Congratulations to the West Gippsland CMA, South Gippsland Landcare Network and Belinda Brennan who also won awards. The number of winners from our region highlights the terrific commitment and effort to Landcare from our community.

Congratulations also to those who were nominated and included on the Landcare Honour Roll. The Honour Roll has been included in a book and copies were gathered for those people who were not

able to attend. YYLN intend to recognise these people at the YYLN Annual BBQ in March 2012.

Landcare Honour Roll

The 25th Anniversary of Landcare Honour Roll is the opportunity for the Landcare community to recognise its longest serving and most committed volunteers.

Here is a list of the Honour roll recipients from the YYLN. A full list will shortly be available on the Landcare gateway. (This has been taken directly from the 2011 Victorian Landcare Awards winners booklet.)

Platinum - more than 25 years of service to Landcare

Merriman Creek Landcare Group: **Pat Brand, Eddie Brand, Norma Garlick, Peter Garlick**
Albert River Landcare Group: **Sue Egan, Gavin Egan, David MacAulay, David and Joy McAninly**

Gold - 20 - 25 years of service to Landcare:

Woodside Landcare Group: **Libby Balderstone, Don and Kay Belcher, Fergus and Rosemary Irving, Graeme and Frankie MacLennan, Andrew and Alison Missen, Gavin Missen, Trevor Missen, Steve Ronaldson, George Triantafyllou, Bryan Walpole, Neil and Ashley Walpole, Robert and Sally Wight**
Albert River Landcare Group: **Jenny and Rob Davies**

Bronze - 10- 14 years of service to Landcare

Woodside Landcare Group: **Bev Beale**

Yarram Yarram Landcare Network: **Leon Trembath**



LOCAL LANDCARE LEGENDS

YARRAM YARRAM LANDCARE NETWORK

By Melissa Ainsworth

The name MacLennan is synonymous with Landcare, particularly in the Woodside district. This edition we focus on Frankie and Graeme MacLennan, our "Local Landcare Legends".

Frankie was the driver behind the establishment of the Woodside Landcare Group some 22 years ago. It was her vision that now sees a prosperous and active group today. In 1993 Frankie was recognised for her achievements and won the Individual Landcare Award, having also served as Secretary of the Group for nine years from 1989 to 1997.

The MacLennan's property "Seaforth" originally consisted of 1300 acres of soldier settlement land. It was purchased by Graeme's parents in 1946. The name "Seaforth" originates not from its proximity to the Ninety Mile Beach but from the MacLennan Scottish heritage. The homestead was built in 1880 and the property has been used for sheep and beef production.

An obvious feature when you arrive at "Seaforth" is the number of completed projects scattered across



Top: The mysterious hybrid Yellow Box tree.

Left: One of the many shelter belt projects across "Seaforth".

Next page: Graeme and Frankie standing in front of the "mystery tree".

the property. All are of various styles and sizes undertaken over a period of close to four decades.

When Graeme was in his 20's he was employed to clear local native vegetation. The long term

environmental impacts of such activity was concerning to him. One of his first farm projects undertaken in the 70's was to create a central laneway. It served a dual purpose for managing

stock and protecting remnant Melaleuca trees. He also included planting Allocasuarina trees sourced from local seed.

Remnant vegetation such as the 17 acres of Allocasuarina woodland

and the mysterious hybrid Yellow Box tree, have either been protected under a Conservation Covenant or incorporated into shelterbelts to assist in its preservation.

In 2004 another project saw approximately 2.5 kilometres of direct seeding and tube stock plantings undertaken adjacent to the Balloong Road. In 2008 this project added another two kilometres of revegetation adjacent to Tetley's Lane.

...continued on next page



LOCAL LANDCARE LEGENDS

YARRAM YARRAM LANDCARE NETWORK

By Melissa Ainsworth

...continued from previous page

These projects have restored the vegetation along the roadsides that were in serious health decline. The success and health of these two projects is astounding. The site design size is very generous and is not the traditional "straight" style. The biodiversity value will be infinite. A vehicle track meanders through this "forest to be" and is both practical and aesthetically appealing.

Protection of ground nesting birds is also accommodated for. The MacLennan's have constructed numerous stock dams and water holes, purposefully built to include a central island. Several wetlands across the farm feature numerous frog species which prove popular

with the Heron and Egret species observed.

With such a long association with the property, Graeme was concerned about the declining health of some of the older scattered Eucalypt paddock trees. Unsure whether the observation of Mistletoe infestation was either the cause or a symptom, Graeme and his nephew began a project to physically remove Mistletoe from affected branches. Mistletoe is a partly parasitic native flowering plant. It depends on its host for both mineral nutrients and water although it can produce its own energy through photosynthesis. Graeme continues to monitor the health of the trees he has treated to



verify if this technique has been successful.

"Seaforth" has been undergoing a transition over many years, from agricultural production to a more personally designed lifestyle retreat. It is a great demonstration of Landcare principles and how they have evolved over time. The passion and commitment the MacLennans have to enhancing the environment is admirable and the projects they have undertaken a credit to them. We are very fortunate to have such dedicated members within our Landcare community.

We congratulate you Frankie and Graeme! ■

Board Profile - Damian Moore



Damian Moore with Oscar.

The man in charge of our Network's "dollars and cents" is Damian Moore, farmer, husband, father and genuinely decent bloke.

Damian attended primary school at St. Mary's in Yarram, followed by secondary school at Sale

Catholic College. Having worked in the Textile Industry for a number of years he returned to Yarram in the late 1990's. Being number three of four Moore siblings, Damian was the only one interested in Agriculture.

Working in partnership with his parents Pat and Norma, they currently farm 600 hectares in a dairy and beef operation. As neighbouring properties became available to add to their farming enterprise, so did the many significant revegetation programs they undertook. These projects have taken an

integrated approach to assist in pasture production, wildlife corridors, shelter and beautification.

In 1999 he married Maria, which ironically follows the family tradition of marrying teachers, as did his father and grandfather! Together they share four beautiful boys, Xavier, Sebastian, Oscar and William.

A close friend introduced Damian to Landcare in 1997. He attended the International Landcare Conference in Melbourne, which at that stage marked 10 years of Landcare in Australia.

This introduction was to foster his interest in Landcare post the farm gate. Having been involved in the Yarram Yarram Landcare Network since the early 2000's, Damian has worked with the last four Network Co-ordinators and has enjoyed working with a cross section of people, all who possess many life skills.

"My Landcare aspirations for the future are simple, let's plan and practice for a better tomorrow. These goals will be achieved on a local level through landscape projects such as the "JARR" and

"Mullungdung to the Coast" type projects that involve community involvement".

The skills that Damian possesses are quite unique and valuable. Our Network would not be governed as effectively and efficiently without his financial business skills in particular. We are very fortunate to have such a busy volunteer work so methodically for our Network.

After five years as Treasurer of the Yarram Yarram Landcare Network, we value and thank you for your commitment! ■



LANDCARE ACTION

YARRAM YARRAM LANDCARE NETWORK

By Peter Webb

The Webbs from Wonyip

Conservation is very much on the agenda at the Webb's farm. Though our large south-eastern paddock is very visible from the road, over half our land area is remnant / regrowth forest. This is an interesting reflection of our priorities - we like agriculture and are happy to call our place "the farm" but equally we have a deep love and respect of how mother nature runs things in her area. We're currently organising a title covenant with Trust for Nature that will protect these precious hills and valleys.

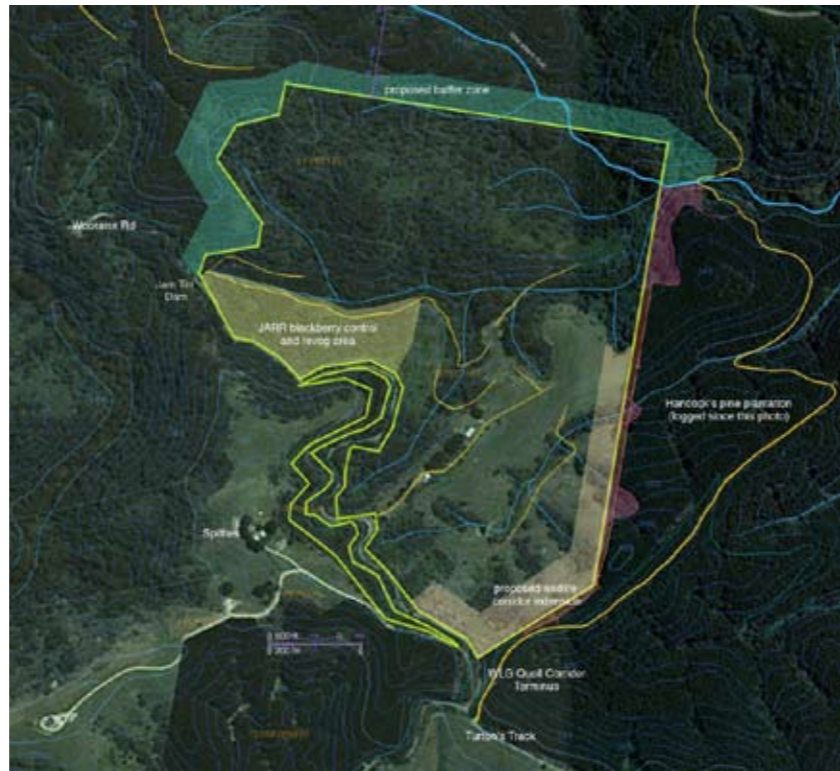
Quite a lot of that regrowth area has benefitted from decades of benign neglect and is thriving, with little weed incursion and abundant flora and fauna. Up until recently it has been shielded by a 16 acre wedge of impenetrable blackberries on our north-western boundary, near the old Jam Tin dam and PMG track. A few years back we re-established access tracks and funded blackberry spraying along the southern aspect of that valley. Thanks to the JARR project funding and generous help from Yarram Yarram Landcare we have further rehabilitated this large area with more spraying and will be revegetating with eucalyptus seedlings this spring to augment the Blackwood and

Wattle, and hopefully thicken the forest canopy. We have excluded stock from this area for over a year now and our aim is to help it return to something resembling benchmark flora for it's location and aspect.

We have Hancocks as neighbours on our northern and eastern boundaries. Northern is plantation Eucalypt and we have been advised it will be logged in 2014. We have approached them, asking for an extended buffer to be left along that boundary as it runs along ridges above some

of our cool temperate rainforest valleys. They have expressed a willingness to do so and asked that we approach them again closer to the logging date, which we will do - armed with maps, documents and a risk assessment backing up our case. We feel it's essential to maintain these buffers as we have seen a similar valley on our eastern boundary dry out after the recent pine logging.

The WLG's Quoll corridor (on Hancock's land) currently terminates right up against our southern corner (next to Turton's track at Woorarra road). We're currently cooking up a plan to fence and revegetate a corridor on our place along that south western / western border right up to our



Above: Property map. Below: Remnant forest around the "Quoll Corridors" project.



remnant bush. This would also connect the Quoll corridor to the Hancock's eucalypt plantation at our rear which is part of Cores and Links and should be revegetated after it's logged in 2014.

Our corridor plan will be prepared over the next few months and we plan to go hunting for some funding at that point.

Our land title has 8 acres on the high side of the Woorarra road (below the Spittles). That has sadly devolved progressively into a bit of a mess but thanks to much vocal encouragement from John Kosta we are planning on addressing the appalling blackberry problem there and revegetating that also. It could form a useful link with Spittles revegetation and therefore through to the Dingo Creek "gorge" on their western side. ■

from Peter, Melissa and Keith Webb.

AROUND THE TRAPS

YARRAM YARRAM LANDCARE NETWORK



Albert River



Above from Left: Hugh, Richard, Geoff, Janey, Sue and Pam; Below: Hard at work on the track above Minnie HaHa Falls

At our September meeting it was reported that the Minnie Ha Ha Falls at Hiawatha was very overgrown.

The following week we held a working bee to clear the track in readiness for the upcoming tourist season.

Ten dedicated members attended, all armed with a variety of hand tools to tackle the Blackberries and Tutson. Within three hours, 400 metres of track was cleared.



Another working bee will be scheduled to complete these works. **Please check out our track and tell us how you find it.** ■

Binginwarri

What a busy time we have had of late! Eighteen members, over a couple of weekends, planted over 3000 trees in the Hedley Ranges, as part of the "Weeds for Trees" program.

A working bee was held at one of our members "Black Saturday" fire affected properties. Ten members attended and removed rubbish and dead trees,

installed nest boxes as well as planting a couple of hundred donated trees. A very big woodpile was made with donated wood, all followed by a barbecue lunch.

Our group enjoyed a day trip to the Cranbourne Botanic Gardens. We also had a "Walk, Talk and Gawk" day trip to Hazel Park Flora and Fauna Reserve, led by Jenny Wolswinkel.

Merriman Creek

Having been fortunate to secure a Small Landcare Grant, the Merriman Creek Landcare group held a working bee on the 11th of September.

Despite the cold, wet and windy conditions ten dedicated members participated at the Stradbroke Hall and Recreation Reserve.

The objective was to erect a sheep proof fence and plant shrubs and trees in the Arboretum. Originally established by the group in 1986 these additional works will mark the 25th Anniversary of Landcare in Victoria.

Our Christmas barbecue meeting will have been and gone by the time this Newsletter is distributed. On behalf of our humble group, Merry Christmas to everyone in our Landcare community! ■



Dedicated Merriman Creek members brave the winter conditions

Wonyip

Our group has been very active of late, with planting 1500 trees over five weekends along the Woorarra and Old Wonyip Roads. As part of the Wellington Shire's "Weeds for Trees" program the tree planting took place after blackberries were treated along the roadsides. We are also happy to announce our success in applying for a "25 years of Landcare" grant. These funds will allow our group



Werner Lange, the Keeper of the Trees, collects one of the many boxes of trees destined for the roadsides in the Wonyip area.

to extend the "Quoll Corridors" project that was originally funded by the World Wildlife Fund. ■

Woodside

Congratulations to one of our members, Elizabeth Balderstone,

on winning the "DPI Sustainable Farming Award" for the West Gippsland Region and the "Rural Press Farming Award" at the recent State Landcare Awards. These were truly well deserved honours and we are all inspired by Libby's dedication to Landcare and her vision for a sustainable farming system within a biodiverse landscape.

The group is holding a working bee at the Balloong School Corner Reserve on Sunday, November 27th to complete the fencing and a general cleanup. A BBQ lunch will be provided. We will also be enjoying our Christmas break-up at lunchtime on December 3rd at the Tarra Bulga Guest House. RSVP to Bronwyn on 0429 808 130. ■



PARTNER ACTIVITY

YARRAM YARRAM LANDCARE NETWORK

LANDCARE WEEK by Nick Dudley

Landcare Week in early September and the 25th Anniversary of Landcare in Victoria was celebrated through the "Gippsland Sustainability Showcase" which included farm walks and field days hosted by Landcare Networks across Gippsland.

Yarram Yarram Landcare Network hosted a field day at 'Merriman Park', the 250 acre property of Justin and Melissa Ainsworth at Stradbroke West. The field day entitled 'Beefing up productivity and enhancing the environment', aimed to highlight

how environmental management systems can actually compliment and improve farm productivity. Despite some fairly inclement weather, over 30 farmers and agency staff attended the day. David McAninly, Chairperson of Yarram Yarram Landcare Network, welcomed all on behalf of the Network and then Doug Crawford from the Department of Primary Industries presented on the Soil Carbon Benchmarking Project, which was about to be rolled out in the region. Following the presentations, Justin and Melissa led a farm

walk over part of the property. Justin explained how he had gone about improving productivity on the property which he had Melissa had taken over 6 years ago. Justin explained that controlled grazing techniques that he had learned through Prograze and BeefCheque were the key to better managing pastures and growing more feed on farm. Melissa showed the group a deep gully on the property containing remnants which had been fenced-off and revegetated. The Ainsworths have covenanted around fifty acres of remnant and

have established extensive shelterbelts through direct seeding and planting of over 25,000 tube stock. Despite excising large areas of their property from grazing and coping with drought, the Ainsworths have increased productivity quite markedly. Melissa's skills in natural resource management and Justin's willingness to explore ways and means of improving production have strengthened their farming partnership and this is evidenced in the way their property is set

Top: testing the soil; Bottom: eating the cake



up, the health and well being of their herd and the farm environment.

The successful day concluded with afternoon tea which included a magnificent cake made by Ann Coulson symbolising 25 years of Landcare in Victoria. ■

COASTCARE NEWS

By Bruce Atkin, Coastcare Victoria's South Gippsland Facilitator



Successful applicants to the Coastcare Victoria Community Grants have just been announced. A number of small projects have been funded in South Gippsland. Although only one of these is within the YYLN's area I have included them all as examples of the type of projects that are being funded (see table).

Congratulations to the Albert River Landcare Group who will receive \$6000 for a revegetation project on the Albert River banks at Seabank. This will be a partnership with Parks Victoria, YYLN and Wulgungo Ngalu

Learning Place who will grow the plants and assist with the planting. The Coastcare Summer by the Sea program for January 2012 has now been finalised and there will be a number of activities running locally. These include a coastal wildlife display in the Port Albert Hall on January 3rd, a whole smorgasbord of marine wildlife displays and activities at the Port Welshpool Seadays Festival (Jan 6,7, and 8), a Minibeast Safari on the Terra River on Jan 20th, and a walk from the inlet to the ocean at McLoughlins

Beach with a PV Ranger in the afternoon of the same day. There are more activities at Port Albert and Seaspray plus Rockpool Rambles and Dinosaur activities further

afield at Walkerville and Inverloch. For the full program, contact Bruce Atkin on 51839116 or visit www.dse.vic.gov.au/coasts and look for

the Coastcare Victoria Summer by the Sea information.

Come along and join in – all activities are educational and fun and FREE. ■

Albert River Landcare Group	Protecting biodiversity and enhancing community partnerships in the Corner Inlet and Nooramunga Marine and Coastal Park area.	\$6,000
Cape Paterson Residents and Ratepayers Association	Stabilising and protecting Cape Paterson's remnant dune ecosystem by removing invasive and noxious weeds and revegetating with indigenous plants.	\$16,300
Friends of Cape Liptrap	Restoration and protection of the coastal heathland surrounding Cape Liptrap lighthouse	\$2,788
Sandy Point Foreshore Committee of Management	Coastal weeds at Sandy Point - a community problem	\$4,880
South Gippsland Landcare Network	Protecting the Bunurong coast against WONS	\$7,260
Three Creeks Landcare Group	Enhancement and protection of the Kilcunda coastal reserve focussing on threatened EVCs, Hooded Plover habitat, WONS and coastal community engagement	\$24,200

FROM THE OFFICE

YARRAM YARRAM LANDCARE NETWORK



By Dan Garlick



Dan's Den

Hi everyone. Spring has sprung and the district looks terrific – great growth, both pasture and plants (and weeds). People appear to be in good spirits and there is a good vibe amongst the Landcare community.

As always, it has been a busy few months with a lot of revegetation work going on with the Recycling for Recovery Project, Weeds for Trees (well done to Binginwarri and Wonyyip

groups) and Mullungdung to Coast, as well as weed control through various programs.

YYLN has also held a number of field days: an excellent gathering at the Binginwarri Hall for Blackberry Control; a terrific Healthy Soils day focussing on Lime at Brian and Jenny Nicholls' and a Gippsland Sustainability Showcase field day at Melissa and Justin Ainsworth's.

The State Landcare Awards were held on Wednesday 16th November at Government House. Congratulations to Libby Balderstone winner:

- DPI Sustainable Farming Award West Gippsland Region
- Victorian Primary Producer Award

Congratulations to all those nominated for a State Landcare Award.

YYLN received some funding through the WGCMA's Small Landcare Grants to get some more Landcare Group farm gate signs done for each Landcare group. These will be distributed shortly to each group contact so that members without a Landcare farm gate sign can receive one. For more details touch base with me.

Congratulations to Wonyip and Binginwarri Landcare Groups who were successful in gaining funds through the 25 Year Anniversary Grants.

The natural resource management industry has changed significantly in recent years and it is therefore important for YYLN to remain relevant and strategic. **YYLN is therefore reviewing its vision, role, aims and objective with a view to updating and developing a Strategic Plan.**

A discussion paper and invite for a representative from your Landcare group to a session in February 2012 will be sent out shortly.

Until next time, thanks again to everyone.

Cheers,

VIC. LANDCARE CONFERENCE

The Victorian Landcare Conference was held on Tuesday 15th November at the MCG. Over 300 delegates attended a very informative and interactive day. Fortunately, Werner Lange, Sam Monks and I attended from the YYLN region and we all found the day invaluable and we thank the WGCMA for sponsoring our attendance. YYLN had a display at the conference that was well received. For more information on the conference please call the YYLN Office on 5182 5073. ■

STAFF PROFILE - SAMANTHA MONKS



Samantha Monks – YYLN Project Officer with Don Belcher on location in Woodside.

In February 2008, I started work with YYLN as a Salinity Project Officer. I had recently

completed my Diploma in Conservation & Land Management (CALM) with the University of Melbourne's McMillan Campus at Leongatha. For me this was a change in direction as I had previously worked as a primary teacher for ten years, specializing in environmental science.

For most of my life I have had a strong connection with the natural environment. As a young child my dream was to become a park ranger in the Snowy Mountains where we often went camping. My dad

was a foreign correspondent for the Daily Express newspaper which meant we were always on the move. We travelled to Africa several times where I loved going on safari in the vast game parks. The school kids over there didn't believe me when I told them about kookaburras and kangaroos, which I found quite devastating at the time!

I have lived in the Yarram area since 1998. I live on a small farm in the Strzelecki Ranges surrounded by forest and wildlife. I love waking up to the songs of the lyrebirds and the

thick mists that shroud the rainforest. I'm still amazed at the sheer beauty of our local environment.

Landcare is also an amazing world. I love meeting people and working closely with the local community. I enjoy the challenges of delivering multiple projects which cover a wide range of natural resource management areas. I feel very privileged to be working in Landcare and to be part of a special community of people who care for the land around us. ■



PROJECT UPDATE

YARRAM YARRAM LANDCARE NETWORK

By Bronwyn Johnson

Mullungdung to Coast Project



Bronwyn Johnson, Seedbank and Mullungdung to Coast Project Officer.

On-ground works for the first year are nearing completion on many properties. Ten landholders have been involved in protecting valuable remnants through stock proof fencing, enhancing remnants through understory planting and construction of native vegetation corridors.

Many of these corridors serve the dual purpose of providing shelter to stock from the strong winds that buffet the Giffard Plain while also creating connections between existing remnants. These connections increase the opportunities for native fauna to move through the landscape in search of food, shelter and a mate. Pollinators are also better able to reach once fragmented populations of wildflowers, shrubs and trees, reducing the effects of isolation.

One landholder who has already completed his project is Greg

Avery. Greg recognised that a portion of his property was generally unproductive as far as cattle and sheep were concerned, but a vitally important coastal habitat, especially for the orange bellied parrot.



Thanks to Australian Geographic for this photo

With stock removed from the paddock two years ago, native plants were regenerating. However, Greg wished to continue to utilise the productive portion of the paddock when required without damaging the non-productive coastal salt marsh. Funding through the Mullungdung to Coast project has made this possible. He has recently written to the network, saying how wonderful it was to have the fence completed. He stated how he'd wanted to do something like this for a while and thanks to YYLN it had finally happened.

The project boundary has been extended for the 2011/12 project to encompass a greater

region of the Giffard Plain. It was identified that by extending the project area greater benefits could be made to the biodiversity values of the landscape. This is due to the extended boundary providing greater opportunity for biolinks between the Nooramunga Marine and Coastal Park up to the Won Wron State Forest, across the Mullungdung State Forest and Giffard Plains to the Holey Plains State Park and back down to the Gippsland Lakes Coastal Park.

Expressions of Interest closed on October 14th and the project officer is busy mapping and assessing the sites for eligibility. All proposals will be evaluated by an independent committee before works can hopefully begin in December. The project is due to run until 2013, so there is still time for other landholders in the project area to formulate ideas for their own properties that could be proposed when the Expressions of Interest open next year. ■

Contact Bronwyn Johnson, Mullungdung to Coast Project Officer on 5175 7896, 0429 808 130 or via email at bronwynj@wgcm.vic.gov.au



A case of mistaken identity

Our last newsletter featured a beautiful photo of a wattle flower identified as 'Prickly Moses' or *Acacia verticillata*. We got lots of feedback on this, which is always appreciated. It's gratifying to know you are paying attention. The attempt to clarify the feedback has sent me on a rather interesting little exploration of the internet.

The Trouble with using Common Names for plants.... is that it is a lot like using common knowledge, which really only extends as far as the social network that shares that knowledge. In the small towns of days gone by, common knowledge would have been exactly that. However, do you know everyone in town now? If you answer 'no', then it's probably not a good idea to assume they know what you do.

In the same way, it's not always a safe bet that the 'common' name of a plant is 'common' in another area. Case in point, our cover picture. Some pointed out that it was not *Acacia verticillata* and, well done, it is in fact *Acacia ulicifolia*. Others said it was not 'Prickly Moses' and herein lies the problem. *Acacia ulicifolia* is also known as Prickly Moses! So I plugged 'Prickly Moses' into Google and got about 4.5 million results - mostly for a boutique brewery in the Otway Ranges. I also found nine different *Acacias*.

It appears it is sort of natural to refer to the spiky acacia in your

neighbourhood as 'Prickly Moses'.

Which is the entire reason the scientific naming system was developed in the first place! Its goal is to categorically define one species from another in such a way as to avoid issues with geography, language, social and political change, population movement, fashion trends and all other possible fluctuations in the time/space continuum.

For your edification, the acacias commonly known as Prickly Moses are: *Acacia verticillata*; *Acacia verticillata ssp ruscifolia* (Broad-leaf Prickly Moses); *Acacia farnesiana*; *Acacia ulicifolia* (also Juniper Wattle); *Acacia pulchella*; *Acacia brownii*; *Acacia hubbardiana*, *Acacia genistifolia* (more commonly Spreading Wattle); *Acacia oxycedrus* (more commonly Spike Wattle); *Acacia riceana* (Tasmanian Prickly Moses) and *Acacia paradoxa* (more commonly Hedging Wattle).

Having cleared that up I think it's time for a beer! ■

PROJECT UPDATE

YARRAM YARRAM LANDCARE NETWORK

By Dan Garlick & Helga Binder

JARR Spatial Vision Workshop

The Spatial Vision Interactive Mapper Workshop, run by YYLN in September saw Beth Mellick, Executive Officer, Norman Wettenhall Foundation (NWF), show community members how to access and input data into an easy-to-use interactive map on the internet.

The NWF have funded the development of this software to enable the collection of data from the community.

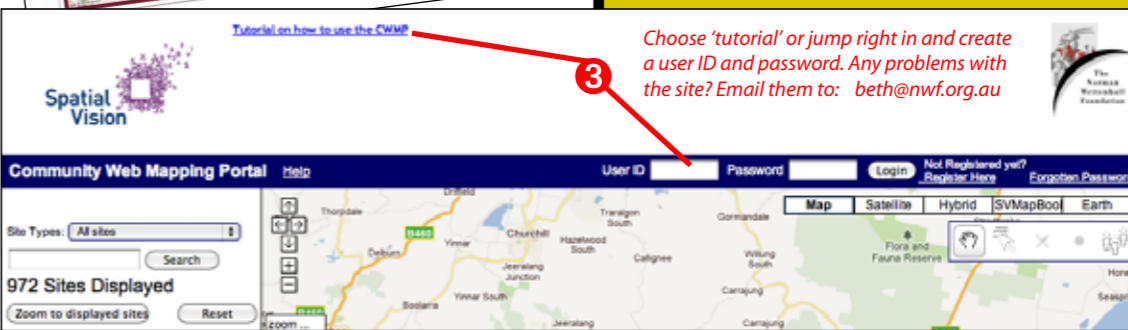
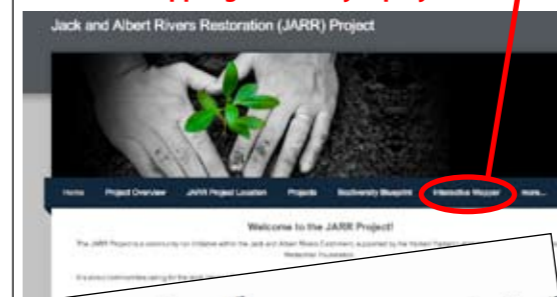
The Mapper allows you to record all wildlife observed in your own little patch as well as any projects done on your property such as erosion, noxious weed or pest control, fencing and planting of wildlife corridors, revegetation and anything else you may have done to contribute to the environmental welfare of your area.

This data can be extremely useful when putting together a plan for rehabilitation or change in a particular area. It may be used

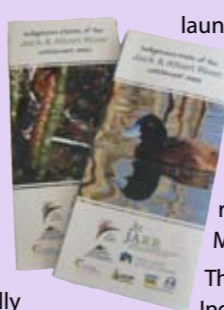
to underpin the rationalisation of projects for which funding is sought or to further an argument with Government bodies as to why certain action should be taken. It will certainly show a commitment in a community to monitor and record what is happening around them.

If collected over a period of 25 years (the much celebrated time of Landcare in Australia to date) then we have an invaluable resource of what action has been taken and how it has impacted on our environment. ■

To use the mapper go to www.jarrproject.com



You have seen them before, but now these two excellent community resources have been officially



launched by Helga Binder, Chair of the Jack and Albert Rivers Restoration Committee at the recent Spatial Vision Mapper Workshop. These brochures – Indigenous Plants

and Indigenous Birds of the Jack and Albert River Catchment - are terrific field guides that each have 96 photos to help identify indigenous plants and birds, and assist in recording data into the Spatial Vision Database.

The brochures are

COMPETITION

Record your sightings in the Spatial Vision Database and be in the running to win a Panasonic Lumix Digital Camera, 8 optical zoom and 28mm wide angle lens valued at \$243 for yourself or an Etrex Garmin Venture HC GPS unit valued at \$192 for your Landcare Group.



To encourage database use the NWF has offered these two very generous prizes for those who look, join and start recording. The individual prize will go to the lucky person who has used the database and who's name is drawn from the hat of all names. The group prize will go the Landcare Group who has the most members registering and recording on the site. Competition closes at midnight on February 17, 2012. Winners will be notified and announced in the Autumn edition of the YYLN News.

For more information, please contact the YYLN Office on 5182 5073 or dang@wgcm.vic.gov.au

Choose 'tutorial' or jump right in and create a user ID and password. Any problems with the site? Email them to: beth@nwf.org.au

available to anyone in the community, particularly schools and are available through the Yarram Yarram Landcare Network Office – Livingston St Yarram or 5182 5073.

Thanks to Alison Kuitert, Richard Appleton (HVP),

Bruce Atkin (Coastcare), and Kaye Proudley who helped Helga produce these brochures. Thanks to Coastcare, HVP and the Norman Wettenhall Foundation who contributed to the costs of the brochures. ■



PROJECT UPDATE

YARRAM YARRAM LANDCARE NETWORK

By Samantha Monks

YYLN Invasive Plants and Animals (IPA) Program



Weed competition

YYLN Staff & Board members attended the **129th Yarram Show** on a wet and wild November day with over 50mm of rain falling in the morning alone! The popular Yarram Landcare stand was set up in the Woolshed displaying information brochures, local weeds and indigenous plants kindly donated by the Tarra Wholesale Nursery. Thanks Dee & Vic!

Once again, the **YYLN Annual Weed Competition** was held. Entrants had to correctly identify 10 local weeds to go in the draw to win one of three \$50 prize vouchers kindly donated

Serrated Tussock

There is an outlying infestation of Serrated Tussock (*Nassella trichotoma*) near Seaspray. The nature of this isolated infestation means there is a real chance of eliminating this weed with the support of the local community. A "Serrated Tussock Community Awareness Survey" was recently conducted across the Seaspray area to help ascertain the level of community awareness and the threats ST poses to our local environment.

The survey was distributed to

Above: Weed Competition Display.
Below: Mark Jago (former YYLN IPA Officer/Facilitator) with son Simon Jago (2nd Place)



by our local sponsors: Tarra Wholesale Nursery, Brown Wigg and Murray Goulburn. ■

Congratulations to the following winners:

- 1st Place:** Sue Inglis, Tarra Valley
- 2nd Place:** Simon Jago, Sale
- 3rd Place:** Laurel Truscott, Foster



Serrated Tussock at Maffra

all properties within a "Seaspray Serrated Tussock Zone" containing over 13,950 Ha. Survey results will be published early in 2012. People who returned a completed survey

Gippsland Coastal Plains Gorse Control Program - Yarram Landcare Leading the Way

Expressions of Interest are open for Year 3 of the "Gippsland Coastal Plains Gorse Control Program (GCPGCP)".

This program continues to provide funding opportunities for the management of Gorse within our network. Our priority focus areas are: Yarram, Alberton, Port Albert, Tarraville, Woodside, Darriman and Seaspray.

The GCPGCP provides valuable community support and extension to our prior investment in Gorse control across the YYLN area. Eligible

participants can receive an incentive grant of 50% towards the costs of physical and/or chemical removal of Gorse. In order to receive this grant, land owners/managers must sign a YYLN landholder agreement to carry out subsequent spraying or removal of Gorse regrowth for a period of three years to avoid reinfestation. ■

For assistance or advice with Gorse control please contact:

Samantha Monks, YYLN Project Officer on 0419 371497 or 51 757895.



Gorse treated off Walpole's Lane, Woodside

were entered into a draw to win a \$500 voucher for rural merchandise from Brown Wigg in Sale.

Congratulations to the following winners: Geoff Hawkins & Melanie Tancred (Sale)

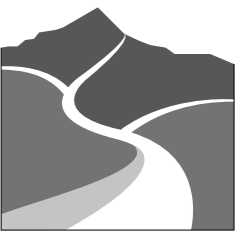
As part of the Serrated Tussock - Caring for Our Country program a "Weed Awareness Workshop" will be held in the Seaspray area in Autumn 2012.

NOTE: Serrated Tussock (*Nassella trichotoma*) is a highly

invasive grass species listed as a Regionally Controlled Weed (RCW) under the Catchment and Land Protection (CALP) Act 1994 in the West Gippsland Catchment Region. Under this act all landowners/managers have a legal requirement to control Serrated Tussock on their property. As a Weed of National Significance (WoNS) it is regarded as one of the worst weeds in Australia because of its invasiveness, potential for spread, economic and environmental impacts. ■

PROJECT UPDATE

YARRAM YARRAM LANDCARE NETWORK



By Samantha Monks

Sustainable Agriculture Programs

Gippsland Plains Drought Tolerant Pastures Demonstration (GPDTPD)

ARARAT PASTURE TOUR

At the start of October members of the GPDTPD group went on an extensive pasture tour of Ararat.

Landcare farmers from Woodside to Seaspray travelled around the Ararat district viewing a range of perennial pastures trials.

The pasture tour was a major education and training component of the Yarram Yarram Landcare Network's, "Gippsland Plains Drought Tolerant Pastures" program. This project has been funded through the Federal Government's "Caring for Our Country" program via the Department of Agriculture, Fisheries and Forestry (DAFF).

The Perennial Pasture Systems (PPS) group hosted our group and is supported by some 65 farmers in the Ararat region. They conduct trials on farms throughout the region and provide regular updates to their members on trial assessments they complete on a monthly basis.

Rob Shea, the coordinator of PPS group, is a former farmer from just out of Ararat with a wealth of pasture knowledge and a passion for exploring new ways and means of establishing sustainable grazing systems. Rob has always been keen to trail new cultivars and has worked alongside DPI and various seed companies in assessing a range of new releases.

It was a terrific opportunity to meet other farmers and learn about the management of an extensive range of pasture

species in another district with similar rainfall to the drought pastures group. We also met other agronomists and animal health scientists on the tour.

Regional Landcare Facilitator for West Gippsland, Nick Dudley, said, "The tour offered a unique opportunity for members of the drought pastures group to view pasture and forage systems in situ. We visited eight properties in the area and inspected trial sites containing a range of pastures and fodder systems including Lucerne, Plantain, Phalaris, Tall Fescue, Cocksfoot and short-term Ryegrass."

"It was exciting to see how some producers in the Ararat area had increased their carrying capacity quite markedly through making informed decisions backed up by on ground research in the local area. In some cases producers had increased stocking rate from 5-6 dry sheep equivalents per hectare, up to 12-13," Nick added.

Comments from Kevin Foat, Woodside,

"I thoroughly enjoyed the three day trip to Ararat to look at perennial pastures. Some pastures have survived more than 50 years and it was great to see new pasture varieties of Phalaris, Tonic Plantain and Lucerne. It was a very well organised tour and everything went smoothly from 8am starts to 10 at night. Rob Shea from the PPS group gave us a highly informative commentary and guided tour



of the area. We also visited the Chinese temple, Gum San and learnt about the history of the Ararat gold rush in 1857."

Comments from Gavin Missen, Woodside:

"I'm extremely pleased I went on the pasture tour to an area I'd never been before. The farmers showed us their new pasture trials and told us how they manage to keep them in good order. I really enjoyed looking at the trial plots."

Comments from Don & Kay Belcher, Woodside:

"Our Landcare Project Officer - Samantha Monks and her counterpart in Ararat - Rob Shea, put together a very comprehensive and busy programme for us, which ran very smoothly. It was an amazing experience to meet with farmers with different climatic conditions and soil types to our area. They were all willing to share their knowledge and experiences with our group. Everyone was very

Below: Members of the GPDTPD & PPS group visit the Greene's property, "Millbanks" at Elmhurst

friendly, we shared many cups of tea and long discussions about perennial pastures. It also gave us an opportunity to get to know each other from our own area."

Comments from Brian & Jenny Nicholls, Stradbroke (Wool and Prime Lamb Producers):

"We praise the efforts of Landcare Project Officer Samantha Monks and Rob Shea from Perennial Pasture Systems for conducting a very informative and enjoyable 3 day tour to Ararat District. All farmers we met were willing to share their knowledge of different pastures and managements, showing us pastures up to 50 years old. Some of the PPS group took time to join us at the evening meal, so many more discussions were had. Their enterprise included cropping, wool, prime lambs, bull beef with pastures of Lucerne, Plantain, Phalaris, Tall Fescue, Cocksfoot and short term Ryegrass." ■

NOTE: The GPDTPD is a three-year sustainable farming project involving members of the Woodside and Merriman Creek Landcare groups. Sixteen producers have established trials to demonstrate the use of drought tolerant perennial pasture species and improved grazing management practices to increase productivity and soil health. 2011 is the final year of this project and participants have successfully committed more than 500 hectares of farm land to new perennial pasture systems.



PROJECT UPDATE

YARRAM YARRAM LANDCARE NETWORK

By Samantha Monks

Healthy Soils – Sustainable Farms

Building Carbon & Managing pH in West Gippsland

On 10th November another successful GPDP-Healthy Soils Field Day was held at Stradbroke on Brian and Jenny Nicholls' property "Mirrawarra". Nearly 40 people from across the Gippsland region attended.

The focus of the day was "Determining the need for lime". Topics covered:

- When is lime a good investment?
- When do I need to apply lime?
- Targets for lime & aluminium
- Lime quality & rates
- Soil biology & lime
- Pasture responses to lime
- Pasture species selection & management
- Inspect ryegrass/ cocksfoot mixes

Brian Nicholls and Lisa Warn, Agricultural Consultant from the McKinnon Project, commenced the day with a farm walk to view newly established perennial pastures. After a BBQ lunch, Jim Shovelton, a senior agronomist and a

Sustainable Agriculture Programs



Jim Shovelton

company director of Mike Stephens and Associates (MS&A) gave a highly informative presentation on 'determining the need for lime'. Jim previously worked at the Department of Primary Industries managing soil test laboratories.

Jim stressed that it is important that farmers shouldn't just apply lime from year to year, but that they should be prepared to soil test regularly to ensure that when lime is applied, it is effective and efficient. He also said, "It is important to assess the liming value of different lime products against each other, otherwise you could be short changing yourself." Jim discussed the need to ascertain what other nutrients are supplied in the lime – dolomite for instance contains high levels of magnesium and is potentially more useful in soils containing lower levels of this nutrient. ■



Left: Nadia Bazihizina (Plant Biologist) from The University of Western Australia – School of Plant Biology.

Saltcap Visit to Warrigal Creek

Over the last 18 months, Yarram Yarram Landcare Network has been working in partnership with the "Saltland Knowledge Exchange Program" developing a pasture trial site at Darriman bordering the Jack Smith State Game Reserve. This trial is part of a national program that encourages farmers to assess their saltland and target the right plants to saline landscapes. Libby Balderstone from "Warrigal Creek" is involved in this unique demonstration to (hopefully) remove highly invasive Tall Wheat Grass from the site, before undergoing further pasture renovations with more suitable salt tolerant species.

Scientists from the Saltcap team have visited the site twice in the past year to collect soil and water samples, measure depth to water table and groundwater salinity levels and record plant species. A device known as a peizometer is used to measure the depth to groundwater in a shallow ground water bore on the site. The peizometer is a bit like a tape measure with an electronic sensor attached; when the sensor comes in contact with water a buzzer sounds and you can read off the depth to water table below. Nadia found that the ground water level had risen from 94 cm

below the surface to 53cm, meaning the water table is becoming in much closer contact with the soil surface, under these conditions it salt can be drawn to the soil surface through a capillary effect.

YYLN Project Officer, Samantha Monks and Regional Landcare Facilitator for West Gippsland, Nick Dudley, assisted Nadia in taking soil samples from the site and also in identifying local salt tolerant plant species. The soil samples and results of the vegetation survey will be sent to Dr Nick Edwards at the Future Farming Cooperative Research Centre in Adelaide. Dr Edwards is researching a range of options for maintaining pastures on salt-affected land.

Data collection is showing some good information that largely confirms our expectations that soil salinity (0-10 and 0-25cm), depth to water table and groundwater salinity levels are all important in predictions of what will grow where. ■

CfOC / WGCMA / YYLN Protecting the Corner Inlet Coastal Hotspot Program

Coastal Saltmarsh Protection Project

There are still limited funding opportunities available for Year 3 of the Coastal Saltmarsh Protection Project. Incentives are available for fencing and revegetation of coastal saltmarsh between the Albert River and Reeves Beach. Please contact Samantha Monks ASAP for further information.

GPDP – HEALTHY SOILS FIELD DAY (GROUP)



SNIPPETS

YARRAM YARRAM LANDCARE NETWORK



JARR Blackberry Suppression / Erosion Control Program

The strategic vision for the Jack and Albert Riparian Restoration (JARR) Project is to provide a coordinated approach to improve the environmental health and productivity of the Jack-Albert Catchment and Corner Inlet Catchment Ecosystem. A key part of the JARR Project is to strengthen the capacity of the local community to address environmental issues.

Since 2009 significant on-ground works have been delivered in the JARR Project area including: a two year blackberry suppression program, planting of 20,000 locally indigenous tubestock, remnant vegetation protection, water-quality monitoring and fencing off water ways.

A Blackberry Control Workshop was recently

held at the Binginwarri Hall with more than 20 landholders attending. The workshop focused on how to effectively control and manage Blackberry using chemical and biological methods. Key presenters included: Bob Wilson -DPI's Biosecurity Area Leader, IPA Operations Branch; Greg Baynon, DowAgroSciences and Brian Gustus DSE Blackberry Rust Officer.

Kevin Heggen from the Binginwarri Landcare Group led a group tour of the Hedley Ranges and showed us areas that had been effectively cleared of Blackberry and recently revegetated.

Note: A special thank you to the DPI for helping us fund the day and to the Binginwarri Landcare group for organising the catering. ■



Blackberry Control Workshop Tour of Hedley Range

For further information Invasive Plants and Animals, Sustainable Agriculture or Protecting the Corner Inlet Programs please contact:

Samantha Monks, YYLN Project Officer - Ph. 0351 757895, Mob. 0419371497 or Email: samantham@wgcm.vic.gov.au



Dear Warren,

Can you help me identify what has eaten large patches of bark off this tree please? Given the remoteness of the location these marks are not made by mechanical nor human means. Why would this have happened? Will the trees be killed?

Puzzled!

Dear Puzzled,

This tree has very obviously been attacked by the Greater Blue-spotted Tree-eating Dinosaur! Only trouble is, we have a distinct lack of these (or any other!) dinosaurs in our area these days, seeing that they were wiped off the face of the earth so many eons ago! Which can only leave one other suspect - the Yellow-bellied Glider. And in all seriousness, I'd be in favour of blaming this fellow, as

Victoria's floral emblem

Did you know that in 1958 the pink form of Common Heath (*Epacris impressa*) was proclaimed the floral emblem of Victoria?

It was first described back in 1805. Belonging to the *Epacridaceae* family, it consists of about forty species and is distributed in temperate eastern Australia.

Common Heath is a slender, upright shrub which grows to approx. 1 metre in height. Leaves appear alternate, narrow and stalkless ranging

Warren the Wise



these scars are left after the glider bites into the trunk or branch to get at the sap and is distinctive for its v-shape, although your scars are almost inverted v's.

Don't worry too much Puzzled - unless the tree has a continuous collar of bark taken off right around the trunk (true ring-barking) by the Gliders, it is most unlikely your trees will die.

Instead you should be honoured to have such an animal on your property. If you cannot spot them at night, the next best thing is to listen for them - a loud call will alert you, beginning with a high-pitched shriek and subsiding into a throaty rattle...very distinctive!

Do all you can to increase their habitat by retaining den trees (if you can establish which these are) and adding recruitment (or future hollow-bearing) trees, retain and protect food resources (especially sap-feeding trees) and maintain connectivity between habitat patches. They are 30cm long with an added tail length of about 45cm. They live in mobile family groups of between 2 to 6 individuals and need a home range of between 20 to 85 hectares which encompass variable food resources.

Lucky you Puzzled, (an envious)

Warren the Wise.



from 4 ~ 16mm in length and sharply pointed. The 25mm long tubular flowers are arranged singly in the leaf axis and can appear very dense in some species, yet sparsely arranged on one side only

with other specimens. Flowering occurs from late autumn to late spring. Colours vary from white to a range of pink tones including a rare double flowered form. ■



YARRAM YARRAM
LANDCARE NETWORK

Livingston St T: 03 5182 5073
Yarram F: 03 5182 6094
Vic 3971 E: yarram@wgcma.vic.gov.au
W: www.yyln.org.au

POSTAGE
PAID
AUSTRALIA